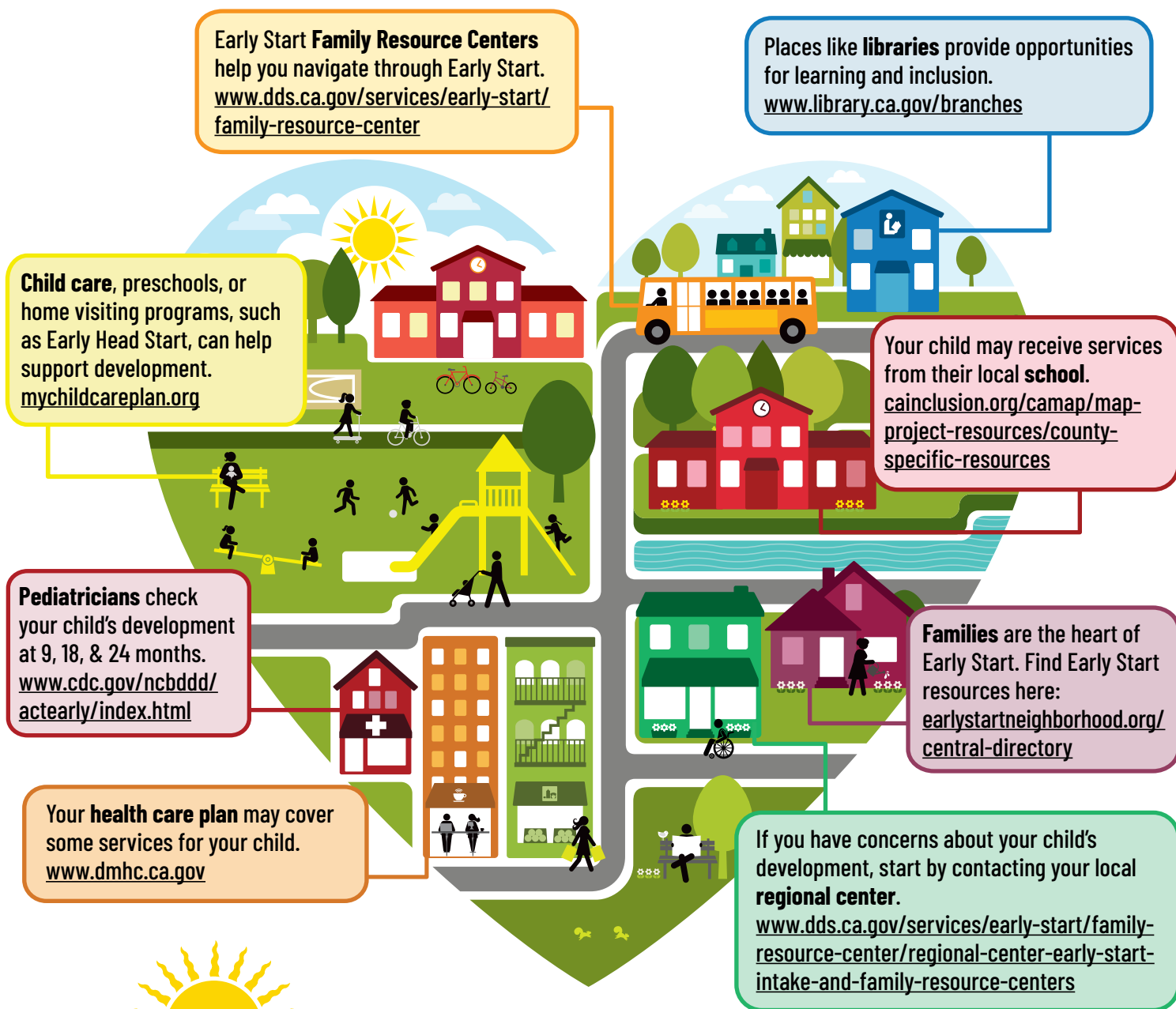


The Early Start Community

If you have a child under age 3 who needs specialized care or has a disability, or if you have a concern about your child's development, there is help and support in your community!



The California Department of Developmental Services and the Interagency Coordinating Council on Early Intervention have information for parents and professionals about how to get help and support. For additional questions, please call the Early Start BabyLine at 800-515-BABY (800-515-2229).



SCAN ME

Local contact information:

Blank area for local contact information.

Design created by Guthrie Devine at Eastern LA FRC.